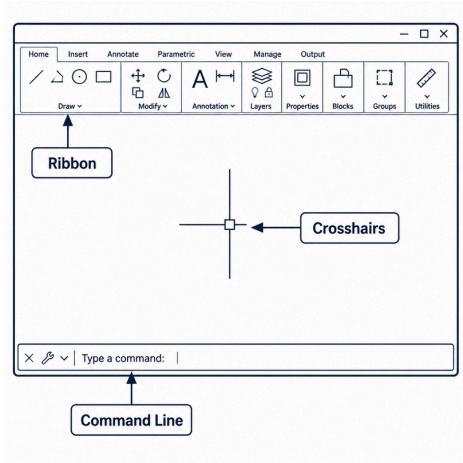


# AutoCAD Technical Vocabulary: Knowledge Check



Use this worksheet to check your understanding of essential AutoCAD terminology and concepts. Answer the questions below using the professional English vocabulary we just covered.

## Part 1: The User Interface



1. What is the name of the toolbar at the top of the screen containing your tools?

2. What do we call the cursor used to select objects and draw?

3. Where do you type specific instructions for the software?

## Part 2: Draw vs. Modify Commands

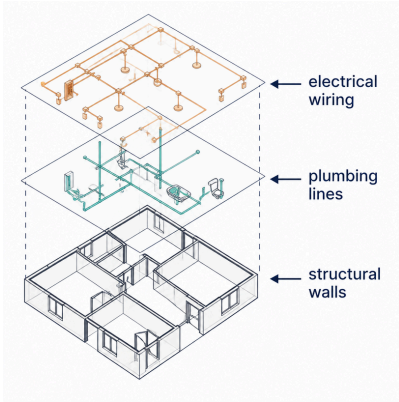
Read the design scenarios below. Decide if the action requires a **Draw** or **Modify** command, and then identify the specific command used (e.g., *Line*, *Circle*, *Polyline*, *Trim*, *Offset*, *Mirror*).

Design Scenario	Draw or Modify?	Specific Command
4. You need to create a parallel copy of an outer wall to represent its thickness.		
5. You are cutting a line so it stops exactly at the edge of another object.		
6. You are flipping a door symbol so it opens in the opposite direction.		
7. You are drafting a round dining table with a specific radius.		



8. You are drawing an continuous outline of a room as a connected sequence of segments.

### Part 3: Project Organization



9. A junior designer tells you: "I use Layers in AutoCAD because it makes the drawing look colourful and pretty."

.....

.....

.....

.....

10. You are designing an open-plan office and need to place 50 identical desks. How does using a **Block** speed up your workflow compared to drawing each desk individually?

.....

.....

### Part 4: Professional Context

11. What is the purpose of using a **Template (.DWT)** file when starting a new project?

- |   |   |   |  |
|---|---|---|--|
| a) It automatically converts 2D drafting into a 3D model. | b) It ensures the project starts with the correct units and settings. | c) It allows the user to switch the interface language. | d) It checks the design for structural mistakes. |
|---|---|---|--|

12. You are saving your completed floor plan for a client. What is the standard AutoCAD file format they should expect to receive?

- |         |         |         |         |
|---------|---------|---------|---------|
| a) .DWG | b) .DWT | c) .BIM | d) .CAD |
|---------|---------|---------|---------|

13. The AutoCAD interface is strictly maintained in **English** at the global standard level. Why is mastering these English commands (like *EXTRUDE* or *EXPLODE*) crucial for a young designer in Poland?

.....

.....

.....

## Answer Key

Ribbon

Crosshairs

Command Line

Layers are for structural organisation. They allow you to separate different data types (like plumbing, walls, electrical) so you can easily lock, hide, or edit specific elements without affecting the rest of the blueprint.

A Block is a pre-drawn object. You only have to draw the desk once, turn it into a Block, and then you can insert it multiple times, saving significant time.

b

a

Because the English interface is the global standard. Whether you work in Warsaw, London, or Dubai, the commands remain exactly the same, allowing for seamless international collaboration.